



# Buddhism Challenge Cards

twinkl



# Buddhism Challenge Cards

twinkl



# Buddhism Challenge Cards

twinkl



# Buddhism Challenge Cards

twinkl

The Kalasha is also known as The Treasure Vase.

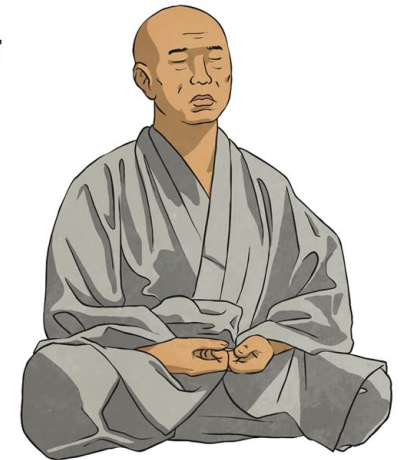
Can you find out why this is?



twinkl.co.uk

Buddhists take off their shoes when they worship.

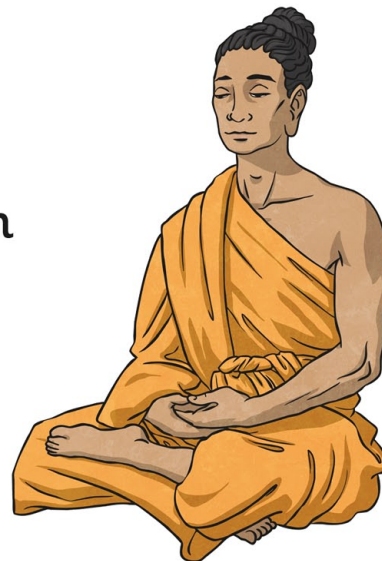
Can you find out why this is?



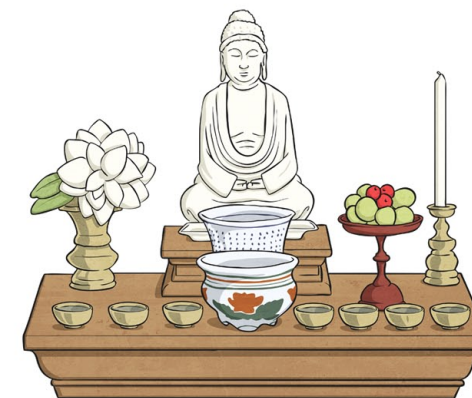
twinkl.co.uk

When Buddhists worship they turn their feet away from the Buddha.

Why do they do this?



twinkl.co.uk



At Wesak, Buddhists do something to statues of the Buddha.

Can you find out what they do and why?

twinkl.co.uk



Can you create a  
Buddhism A – Z?

A = Awakened one  
B = Buddha  
C = Candles  
D = Dharma

a  
b  
c  
d

twinkl.co.uk

There is a certain time each month  
when Buddhists often go to their  
temple to worship.

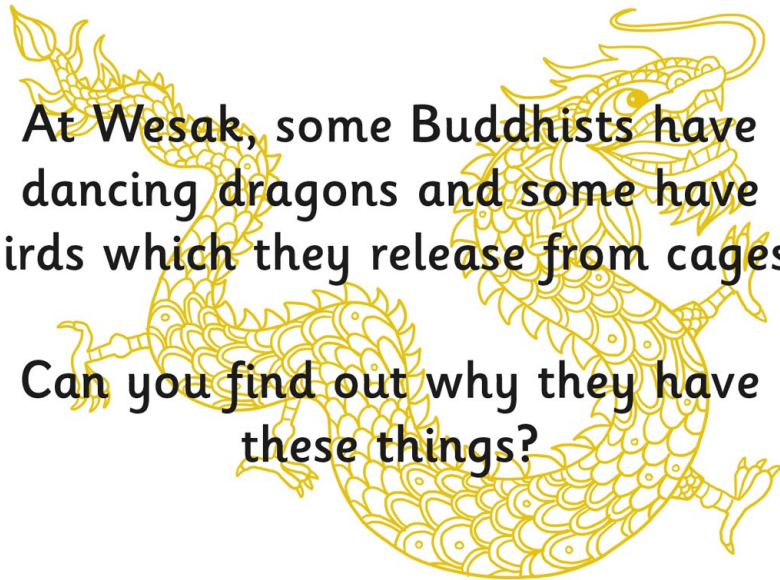


Can you find out when this is?

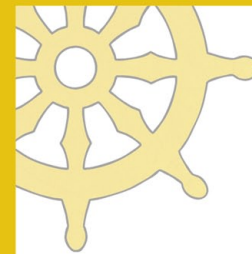
twinkl.co.uk

At Wesak, some Buddhists have  
dancing dragons and some have  
birds which they release from cages.

Can you find out why they have  
these things?



twinkl.co.uk



Buddhist temples are  
different shapes.

Can you draw the different  
shapes they are and find  
out where each style would  
be found?



twinkl.co.uk